

Technical Data Sheet

CTS 630A

T-shaped separable connector

for polymeric cables for outer cone system terminals type C

Cellplux screwable T-shaped separable connectors CTS are suitable for connecting all polymeric-insulated 1-core cables (PVC, PE, XLPE, EPR), with different types of semi-conductive layers (graphite-coated or strippable) and screen design (wire or tape screen) to switching equipment and transformers having an outer cone system type C, up to maximum network voltage of 36 kV in accordance with EN 50180 and EN 50181.

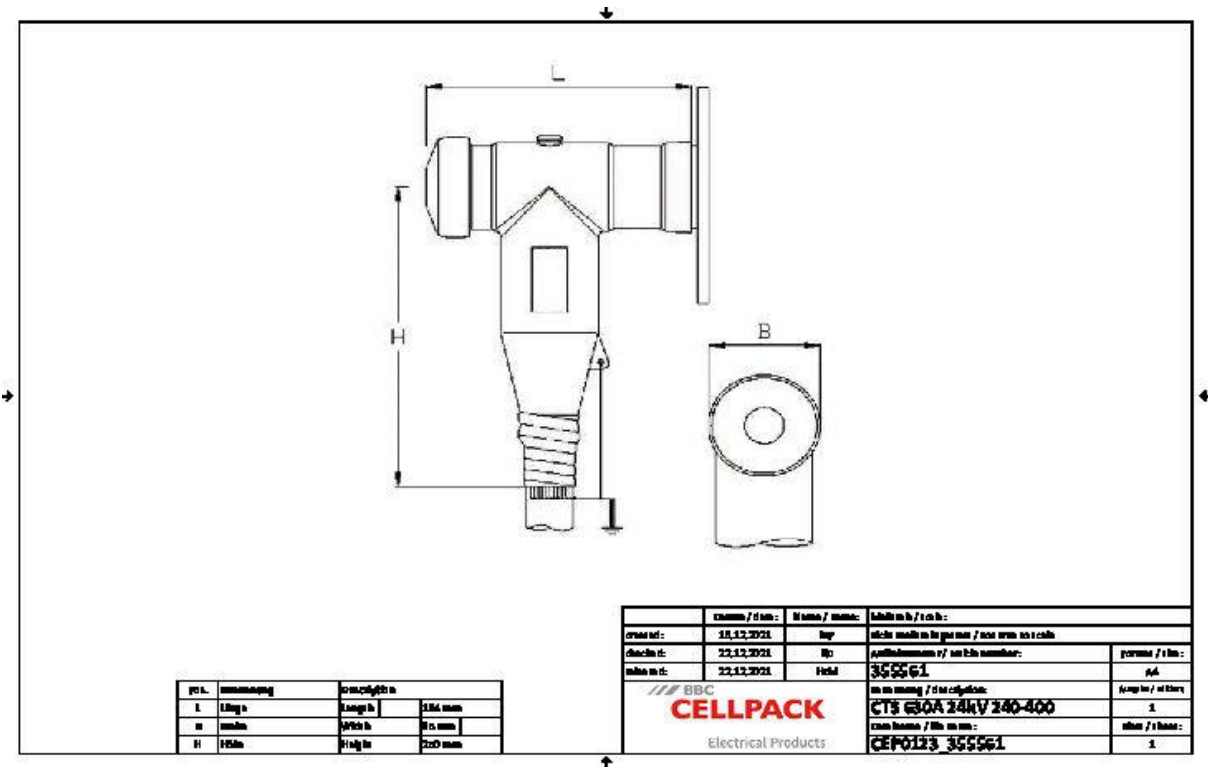


Product description

Article name	CTS 630A 24kV 240-400
Article number	355561
Notes	Other T-shaped separable connectors (e.g. for armoured or graphite-coated cables, class 5 etc.) available on request.
Optional accessory	EGA earthing kit for cables with tape screen (see Connecting technology)
Characteristics	With capacitive measuring point for voltage checking
	Suitable for various cone voltage sensors
	Routine tests (AC test, PD measurement, X-ray control)
	Outer semi-conductive layer made of semi-conductive EPDM provides protection from exposed electrical parts
	Cable sheath insulation fault test may be performed while under voltage
	For both copper and aluminium conductors
	Quick, safe and easy assembly
	Suitable for a wide range of applications due to integrated screw cable lug
Applications	Indoor
	Outdoor

Technical Data Sheet

Technical data



Voltage levels	U0/U (Um) 6/10 (12) kV - 19/33 (36) kV U0/U (Um) 6/10 (12) kV - 12,7/22 (24) kV
Test standards	CENELEC HD 629.1
Length L	194 mm
Width B	85 mm
Height H	250 mm
Diameter over core insulation after removal of the outer conductive layer min	23.7 mm
Diameter over core insulation after removal of the outer conductive layer max	23.7 mm
Nominal cross section 12 kV min	240 mm ²
Nominal cross section 12 kV max	400 mm ²
Nominal cross section 17,5 kV min	240 mm ²
Nominal cross section 17,5 kV max	400 mm ²
Nominal cross section 24 kV min	240 mm ²
Nominal cross section 24 kV max	400 mm ²

Technical Data Sheet

Logistics data

Delivery scope	Set of 3 separable connectors
	Silicone field control elements
	Earthing set
	Screw cable lugs for main conductor
	Assembly material
	Assembly instructions
Shelf life description	Unlimited shelf life
Storage temperature max	50 °C
Storage temperature min	0 °C
Country of origin	Germany
Customs tariff number	85479000
EAN-UPC	4010311172460

EAN-UPC	4010311172460			
Alternative unit of measure	Piece	Carton	Pal. OW	
Base quantity	1	1	32	
Base unit of measure	Piece	Piece	Piece	
Length (mm)	371	371	1200	
Width (mm)	295	295	800	
Height (mm)	237	237	1130	
Net weight (kg)	7.92	7.92	253.44	
Gross weight (kg)	7.92	7.764	266.648	