



Y Cast resin branch joint

for polymeric cables and conductors

Universally suitable for branching polymeric cables or conductors insulated with PVC, PE, XLPE and EPR (e.g. N(A)YY, NYM, TT) with or without concentric conductor. Suitable for branch clamps on copper and aluminium conductors.

Characteristics

- Compact dimensions
- Splice area visible before casting
- High-quality transparent shockproof plastic shell
- Large filler aperture to facilitate casting
- Resistant to chemical agents
- Resistant to alkaline earth elements
- Stabilized against UV rays
- Longitudinally and transversely water-tight
- High electrical insulating values
- High mechanical strength
- Ready for immediate operation
- Quick and easy assembly saves time and reduces costs

Application/Suitability

- Indoor
- Outdoor
- Underground
- Water
- Installation ducts

Voltage level

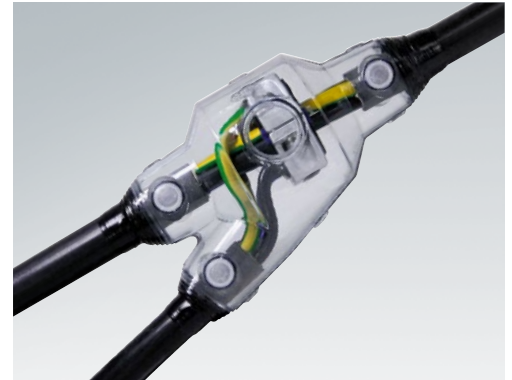
- U_0/U_m 0.6/1 (1.2) kV

Test standards

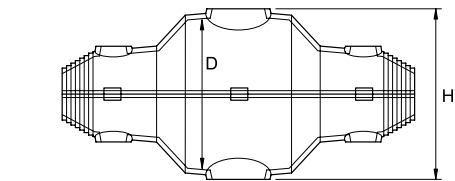
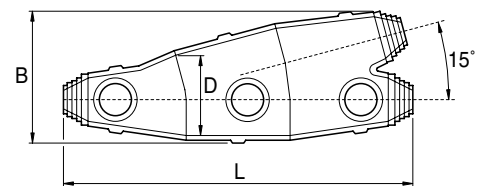
- DIN EN 50393 (corresponds to VDE 0278)

Storage conditions/Shelf life

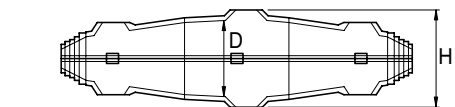
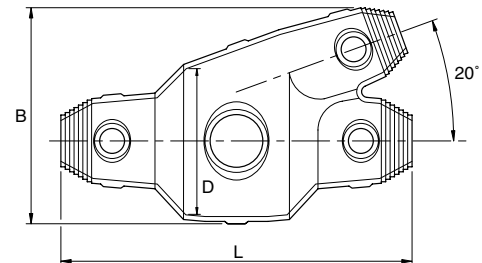
- Cast resin up to 40 months



Dimensions



Y 00 - Y 2, Y 3.5, Y 5, Y 6



Y 3, Y 4, Y 4.5

Scope of delivery

Hydrolysis resistance PUR type EG cast resin (containing the correct volume ready for mixing), packed in practical and easy-to-use two-chamber bags, transparent plastic shell, closing stops, fill and air-release funnels, PVC insulation tape, protective gloves, assembly instructions

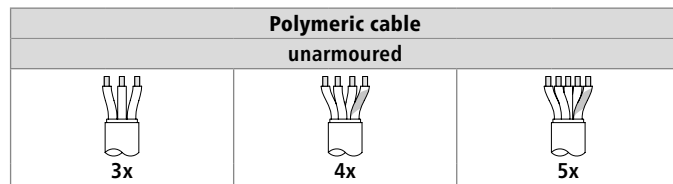
- Optional accessory:
- Screw branch clamp AK (see Connecting technology)
 - Branch clamp KP (see Connecting technology)
 - Branch clamp HE 1/70/150 (see Connecting technology)
 - Split bolt clamp FK (see Connecting technology)
 - Cleaner UNIVERSAL CLEANER 121 (see Accessories)

→ Continued on the next page

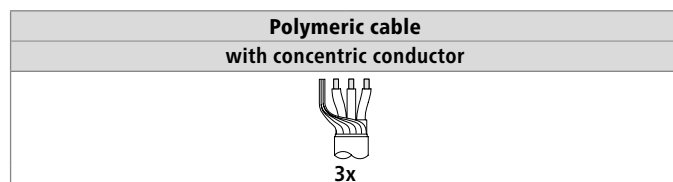


→ Continuation

Y Cast resin branch joint



Type	L mm	B mm	D mm	H mm	max. Cable-Ø mm		max. Nominal cross section per conductor mm ²						Art.-No.	
					Main cable	Branch cable	Main cable	Branch cable	Main cable	Branch cable	Main cable	Branch cable		
Y	00	150	75	38	50	19	19	4	2.5	4	2.5	4	2.5	133841
	0	185	80	45	55	17	17	6	6	6	6	6	6	152932
	1	240	110	60	70	22	22	10	10	10	10	10	10	124730
	2	285	120	65	75	34	30	25	25	25	25	25	25	147533
	3	240	145	100	110	42	37	50	25	50	35	25	25	131123
	3.5	300	150	110	120	54	38	70	25	50	35	35	35	131118
	4	285	170	110	120	53	37	95	35	95	50	50	35	124763
	4.5	335	193	120	130	56	42	150	70	150	70	120	70	131119
	5	382	220	140	150	62	52	240	150	240	95	150	95	157645
6	570	275	180	190	90	80	300	240	300	185	150	150	131126	



Type	L mm	B mm	D mm	H mm	max. Cable-Ø mm		max. Nominal cross section per conductor mm ²		Art.-No.
					Main cable	Branch cable	Main cable	Branch cable	
Y	00	150	75	38	50	19	19		133841
	0	185	80	45	55	17	17	6/6	152932
	1	240	110	60	70	22	22	10/10	124730
	2	285	120	65	75	34	30	16/16	147533
	3	240	145	100	110	42	37	25/25	131123
	3.5	300	150	110	120	54	38	35/35	131118
	4	285	170	110	120	53	37	70/70	124763
	4.5	335	193	120	130	56	42	120/120	131119
	5	382	220	140	150	62	52	150/150	157645
6	570	275	180	190	90	80	240/120	131126	