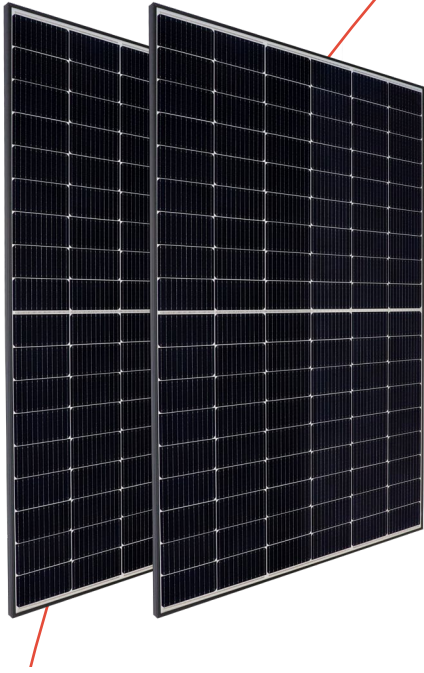


Have sun!

On modules & mounting systems  
**15 years  
combination  
warranty**



[Product datasheet](#)

# IBC MonoSol 400 | 405 | 410 OS10-HC

Long lifetime and high-performance  
in combination.

Online shop:  
Find our products  
and further  
information here.



### Environmental impacts

Maximum lifetime under extreme conditions like high salt or ammonia exposure.

### Ribbons

Improved light efficiency with angled light irradiation benefited by round cell connector design.

### Multi-busbar technology

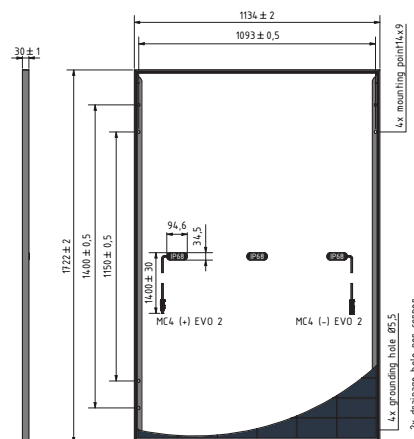
Reduced power and shading losses by using of 9 cell connectors.

### You also benefit from:

- a positive power tolerance (-0/+3%)
- increased mechanical stability (5400 Pa)
- a German guarantor
- 100% proved quality
- a 25-year performance warranty
- a 15-year product warranty



Have sun!



IBC MonoSol	400 OS10-HC	405 OS10-HC	410 OS10-HC
Article number	2005700102	2005700103	2005700107
<b>Electrical data (STC)<sup>2</sup></b>			
STC Power P <sub>max</sub> (Wp)	400	405	410
STC Nominal Voltage U <sub>mp</sub> (V)	30.75	31.0	31.25
STC Nominal Current I <sub>mp</sub> (A)	13.01	13.07	13.12
STC Open Circuit Voltage U <sub>oc</sub> (V)	36.75	37.0	37.25
STC Short Circuit Current I <sub>sc</sub> (A)	13.76	13.83	13.88
Module Efficiency (%)	20.5	20.7	21.0
Power Tolerance (%)	-0/+3	-0/+3	-0/+3
<b>Electrical data (NMOT)</b>			
NMOT (°C)	45	45	45
800 W/m <sup>2</sup> NMOT AM 1.5 Power P <sub>max</sub> (Wp)	299	302.7	306.5
800 W/m <sup>2</sup> NMOT AM 1.5 Nominal Voltage U <sub>mp</sub> (V)	28.56	28.8	29.03
800 W/m <sup>2</sup> NMOT AM 1.5 Open Circuit Voltage U <sub>oc</sub> (V)	34.55	34.79	35.02
800 W/m <sup>2</sup> NMOT AM 1.5 Short Circuit Current I <sub>sc</sub> (A)	11.13	11.18	11.22
Relative Efficiency Reduction at 200 W/m <sup>2</sup> (%)	3.0	3.0	3.0
<b>Temperature coefficient (linear)</b>			
Tempcoeff I <sub>sc</sub> (%/°C)	0.05	0.05	0.05
Tempcoeff U <sub>oc</sub> (mV/°C)	-97.39	-98.05	-98.71
Tempcoeff P <sub>mp</sub> (%/°C)	-0.34	-0.34	-0.34

<b>Operating conditions</b>	
Max. System Voltage (V)	1500
Application Class	A
Reverse Current I <sub>r</sub> (A)	25
Fuse protection from parallel strings	2
Protection class	II (DIN EN 61140)
Fire protection	Class C (IEC 61730-ANSI/UL790)
<b>Mechanical properties</b>	
Dimensions (L × W × H in mm)	1722 × 1134 × 30
Weight (kg)	21.5
Max. Test load, Push/Pull (Pa)	5400/2400
Max. Design load <sup>2</sup> , Push/Pull (Pa)	3600/1600
Front sheet (mm)	3.2 (low-iron photovoltaic glass and anti-reflective coating)
Frame	anodized aluminium, sturdy hollow-chamber frame
Cells	12 × 9 mono-crystalline silicon cells
Connection type	EVO2
<b>Warranties and certification</b>	
Product warranty	15 years <sup>1</sup>
Performance warranty	25 years <sup>1</sup>
Annual degradation	year 1 2.5% year 2-25 0.7%
Certification	IEC 61215, IEC 61730-1/-2, ISO 9001, ISO 14001, OHSAS 18001
<b>Packaging information</b>	
Number of modules per pallet	36
Number of pallets per 40' container	26
Dimensions incl. pallet (L × W × H in mm)	1767 × 1130 × 1243
Gross weight incl. double pallet (kg)	824
Stackability per pallet	2-fold

1) The linear power and product warranty are only valid for installations within Europe and Japan. The warranty requires installation according to the valid installation instructions. Standard test conditions: 1000 W/m<sup>2</sup> irradiation with a spectral distribution of AM 1.5 and a cell temperature of 25°C. 800 W/m<sup>2</sup>, NOCT. Information according to EN 60904-3 (STC). All values according to DIN EN 50380. Errors and changes reserved. The precise conditions and content can be taken from the respectively valid version of the product and power warranty, which you can obtain from your IBC Premium Partner.

2) Loads according to IEC 61215-2:2016, max. design load

3) Measurement tolerances +/- 3% at STC: 1000 W/m<sup>2</sup>, 25 +/- 2 °C, AM 1.5

Your Premium Partner