

[Terms & Conditions](#)  
© 2015 Tane Alarm Products

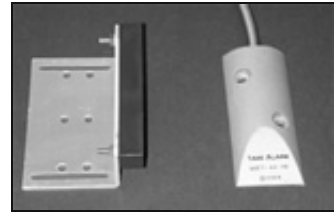
[Print](#) [Close](#)



## Surface Mount Contacts

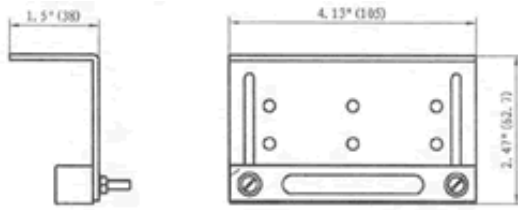
### MET-44 Overhead Door Contact

- Small size with special push-pin that insures cable never comes out of switch side
- Adjustable "L" bracket, magnet can be installed 10 ways!
- Armored cable in 18" or 36" size
- Beats industry standards!
- UNIQUE FEATURE: Besides epoxy, TANE uses a unique pin to hold the cable in place forever.

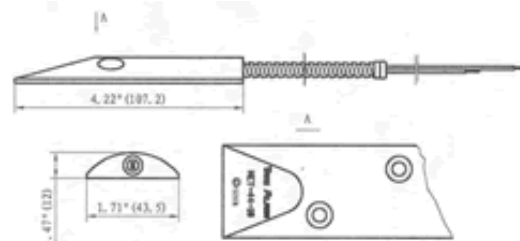


### Product Specifications

#### Magnet Assembly



#### Contact Assembly



### Ordering Information

**Closed Loop 18" Cable**  
MET-44-18

**Closed Loop 36" Cable**  
MET-44-36

**Open Loop 18" Cable**  
MET-45-18

**S.P.D.T 18" Cable**  
MET-46-18

[Terms & Conditions](#)  
© 2015 Tane Alarm Products

[Print](#) [Close](#)