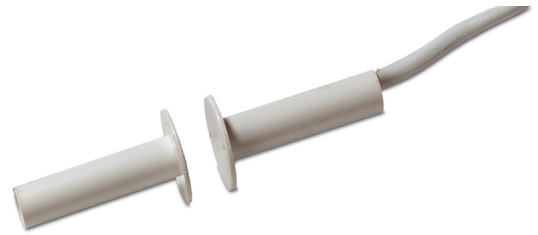




## Product Data Sheet

# MM110

Recessed mount contact - flanged, wired



### Standard Features

- Robust design
- 4 Wire connection
- Easy installation
- Passive tamper
- Fully encapsulated
- ABS body
- Long life Rhodium contact

# MM110

Recessed mount contact - flanged, wired

## Specifications

Operating gap	15 mm (max.)
Connections	4 wires
Dimensions (Ø x L)	8 x 33 mm
Hole required	-
Voltage	1 to 50 VDC
Switching current	Max. 500 mA
Contact type	NC
Contact power	Max. 10 VA
Colour	White
Packaging	20 x 1

## Ordering Information

Part No.	Description
MM110	Recessed mount contact - flanged, wired
MM110S60	Surface mount window-door contact, brown, wired, 15mm standard operating gap

