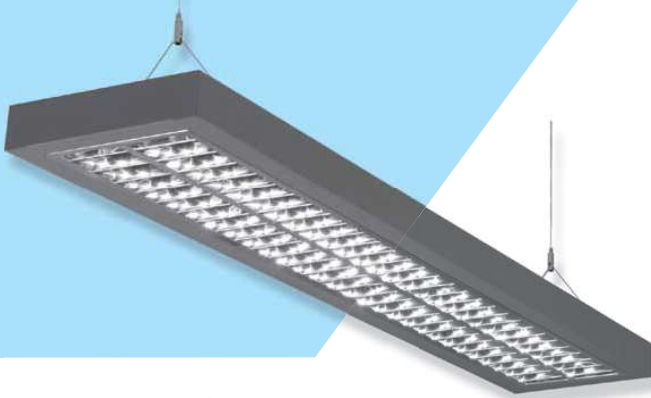
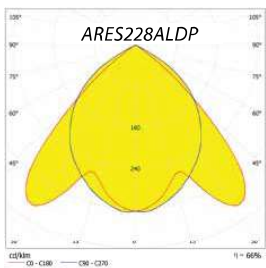
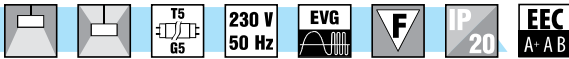


ARES



ARES228ALDP



Pendant interior fittings

Body:

Grey (RAL 9007) painted metal sheet

Optic (&):

ALDP - double parabolic louvre category C2 of highly polished aluminium

MATDP - double parabolic louvre category C2 of mat aluminium

Wiring (#):

EP - high frequency ballast HFB (standard)

EPSA - HFB analogue dimmable (1-10 V)

EPSD - HFB digital dimmable TRIDONIC ECO

EPSDD - HFB digital dimmable DALI

MULTIWATT - universal HFB for T5 lamps

Application:

Pendant luminaires for direct-indirect lighting of interiors (some variants of the fixture can be installed as a surface mounted)

These fittings are recommended for offices, for lighting areas with high requirements for light and glare control.

Versions:

ARES - pendant fittings for direct indirect illumination (open upper side of the fittings), suspension set included

ARESD - pendant fittings for direct illumination only (closed upper side of the fittings), suspension set included

ARESP - surface installed fittings for direct illumination only, without suspension set

ARES /R - pendant fittings for direct/indirect illumination (open upper side of the fittings), for continuous assembly into row

Accessories:

1661004001 - Suspension ARES /R 1x (connecting part and cord suspension, without cable - 1 fixing point)

1662004001 - Suspension ARES /R 2x (connecting part and cord suspension, without cable - 1 fixing point)

	W	A	B	X	Y	R	kg
ARES128 (54)&#	1x28 (54)	1245	160	900	85	990	3,9
ARES228 (54)&#	2x28 (54)	1245	245	900	170	1290	4,4
ARES135 (49,80)&#	1x35 (49,80)	1545	160	1200	85	990	5,7
ARES235 (49,80)&#	2x35 (49,80)	1545	245	1200	170	1290	6,2

