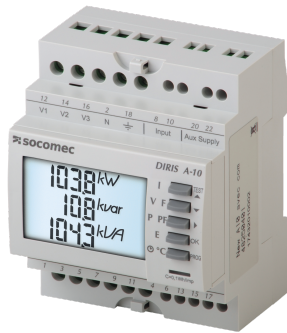


**48250400**

## Multifunction meter DIRIS A-10 W/O RS485 MODBUS COM



### Strong points

- Easy to use
- Built-in battery temperature sensor
- Detects wiring errors
- Compliant with IEC 61557-12

### General characteristics

- Easy to use.
- Built-in temperature sensor.
- Detects wiring errors.
- Compliant with IEC 61557-12.

### Compliance with standards

- IEC 61557-12
- IEC 62053-22 Class 0.5 S
- IEC 62053-23 Class 2
- UL

### Access to resources (ex: manuals)



<https://www.socomec.co.uk/en-gb/reference/48250400>

The DIRIS A-10 is a modular multifunction meter for measuring electrical values in low voltage networks with connection to current transformers. It allows all electrical parameters to be displayed and utilised for communication and/or output functions.

### Classification

UNSPSC	83101808
ETIM Class	EC002301
IGCC	6042

### Commerce

Effective date	2017-05-15
Country of origin	FR
Discount Policy	1EM10
Discount Policy Label	MONITORING DEVICES

### ETIM - Electrical characteristics

Accuracy class active energy according to IEC 62053-22	0.2S
Accuracy class reactive energy according to IEC 62053-23	Other
Sampling frequency [Hz]	65
Number of voltage measurement inputs	3
Number of current measurement inputs	3
Voltage type (supply voltage)	AC
Supply voltage AC 50 Hz [V]	110..277
Supply voltage AC 60 Hz [V]	110..277
Measuring range for frequency [Hz]	45..65

### ETIM - Technical features

Ampere meter	Yes
Blind power meter	Yes
With rotational speed meter	No
Frequency meter	Yes
Pulse counter	Yes
Voltmeter	Yes
Effective power measurement device	Yes
Display	LCD
Remote display	No

### Logistics

GTIN/EAN	3596033014796
Customs number	9030310090
Price unit	PC
Weight of the packing unit	0.298
Length of the packing unit	0.135
Width of the packing unit	0.095
Depth of the packing unit	0.107

### Norms

Conformity to standards	IEC UL
-------------------------	------------

### Technical Characteristics

Application	Monitoring
Communication ports	None

Communication protocols	None
Model	A10