

Motion detector

# sensIQ

EVO white

EAN 4007841 029562

**STEINEL**<sup>®</sup>  
PROFESSIONAL



infrared sensor 3 x  
100°



3 zones scalable  
2-20m

2500w

2500 W max.



IP54



2 - 2000 lux



5 sec - 15 min



ideal 2 - 5 m



energy saving

5 JAHRE  
HERSTELLER  
GARANTIE

manufacturer's  
warranty  
steinel-professional.de/garantie

CE

## Function description

King of the infrared motion detectors. The revolutionary sensIQ for indoors and out, ideal for building entrances, loading bays, installation height up to 5 m, quadruple sensor system for optimum coverage over a 300° detection angle, 20 m range (tangential), metre-precision reach setting in 3 different directions, heavy-duty relay for high switching capacity. Remote control and corner wall mount bracket included.

Motion detector

**sensIQ**

EVO white

EAN 4007841 029562

**STEINEL**<sup>®</sup>  
PROFESSIONAL

### Technical specifications

Type	Motion detectors
Type of accessory	Corner adapter
Dimensions (L x W x H)	144 x 113 x 172 mm
Mains power supply	220 – 240 V / 50 – 60 Hz
Sensor Technology	passive infrared
Application, place	Indoors
Application, place, room	multi-storey car park, underground car park
Installation site	wall, ceiling, corner
Type of installation	Surface wiring
Switching zones	1360 switching zones
Electronic scalability	No
Mechanical scalability	Yes
Mounting height	2,00 – 5,00 m
Optimum mounting height	2 m
Detection angle	300 °
Angle of aperture	90 °
Sneak-by guard	Yes
Capability of masking out individual segments	Yes
Reach, detail	Reach adjustable from 2 - 20 m in 3 directions (100° in each)
Reach, radial	r = 4 m (42 m <sup>2</sup> )

Reach, tangential	r = 20 m (1047 m <sup>2</sup> )
Twilight setting TEACH	Yes
Twilight setting	2 – 2000 lx
Time setting	5 s – 15 Min.
Switching output 1, resistive	2500 W
Switching output 1, number of LEDs / fluorescent lamps	8 pcs.
Constant-lighting control	No
Basic light level function	No
With remote control	Yes
Interconnection	Yes
IP rating	IP54
Material	Plastic
Ambient temperature	-20 – 50 °C
Colour	white
Colour, RAL	9010
IDs, certificates	VDE
Manufacturer's Warranty	5 years
Version	white
PU1, EAN	4007841029562

### Accessories

EAN 4007841 009151	Remote control Smart Remote
EAN 4007841 007638	Remote control RC9

Motion detector

# sensiQ

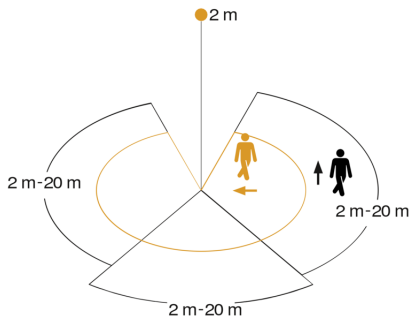
EVO white

EAN 4007841 029562

# STEINEL®

PROFESSIONAL

## Detection Zone



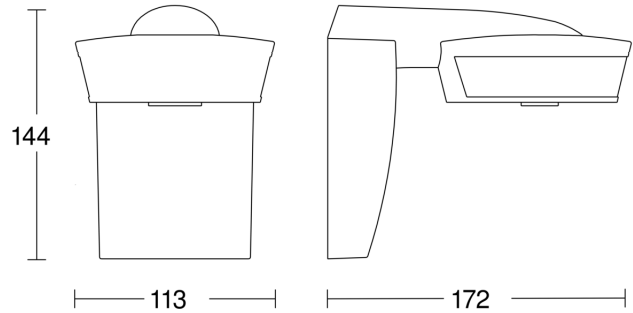
Mögliche Montagehöhe: 2,00 m – 5,00 m

Orange: radial

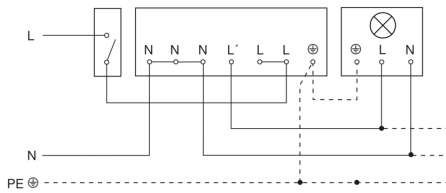
Schwarz: tangential

3 skallerbare Zonen

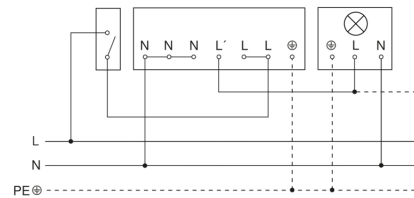
## Dimension Drawing



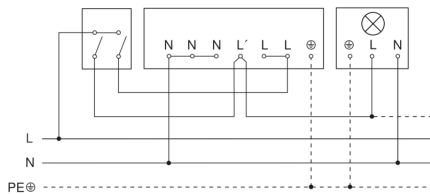
## Light without neutral conductor



## Light with neutral conductor



## Connection using two-circuit switch for manual and automatic operation



## Connection via a two-way switch for manual override and automatic operation

