

[Terms & Conditions](#)
 © 2015 Tane Alarm Products
[Print](#) [Close](#)



Recessed Contacts

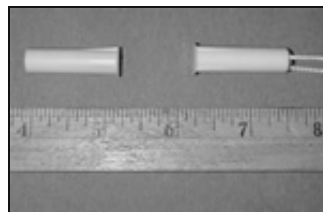
TAP-10 3/8" Diameter Contact Magnet

GAP: 3/4" - 1 1/2"

SIZE: 3/8" Diameter x 1 1/4" Length

#22 AWG

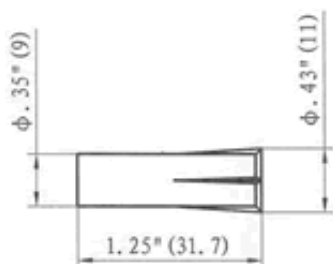
12" leads std. Longer leads available.



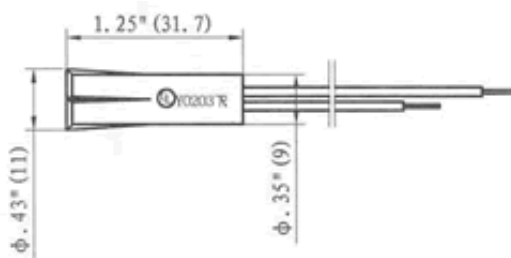
- Available in Brown or White
- Add "R" for Resistor + Value
- **Available with a Bare Magnet of any size**

Product Specifications

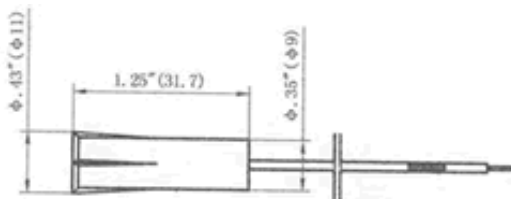
Magnet Assembly
TAP-10



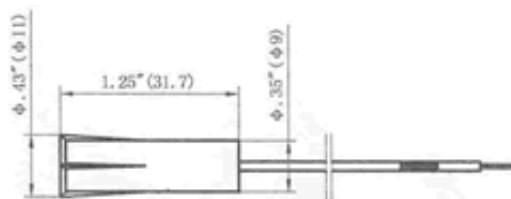
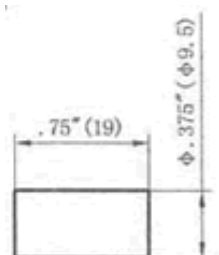
Contact Assembly



TAP-10 DM



TAP-10 WG



Ordering Information

**Closed Loop
3/4" Gap**

TAP-10

**Closed Loop
1" Gap**

Incher
TAP-10

**Open Loop
3/4" Gap**

TAP-11 B

S.P.D.T

TAP-12
C

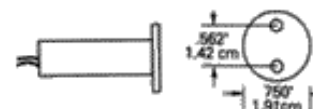
**Closed Loop
1 1/2" Gap**

TAP-10 WG
(w/Bare 3/8" x 3/4" Magnet)

For 3/8" Flange
**Closed Loop
3/4" Gap** **Open Loop
3/4" Gap**

TAP-10 FM

TAP-11 BFM



[Terms & Conditions](#)
 © 2015 Tane Alarm Products
[Print](#) [Close](#)